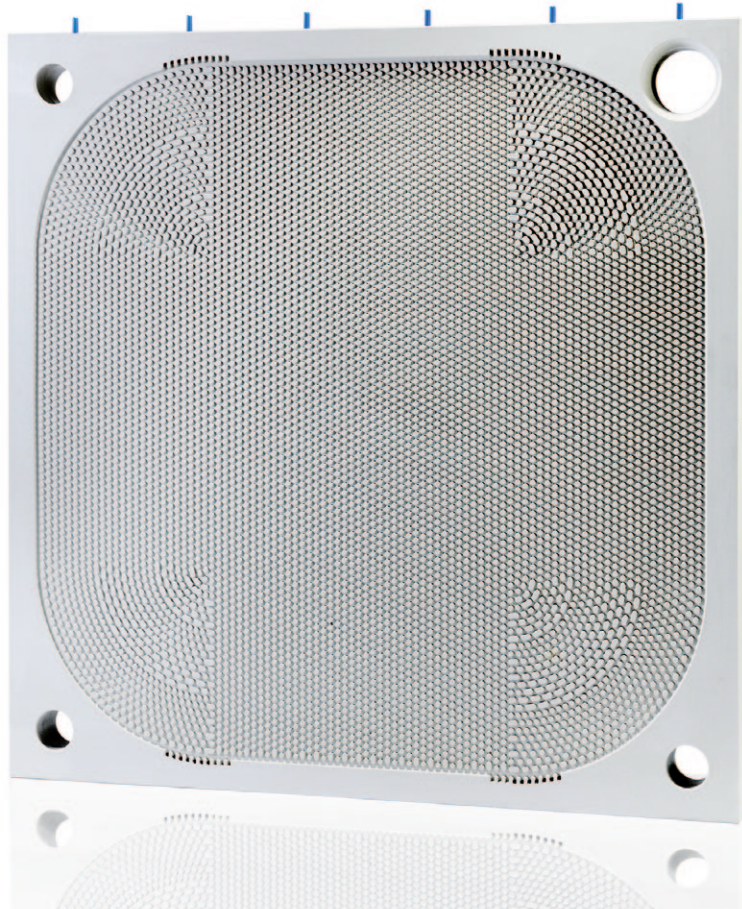


Membrane Filter Plate

»Empty Chamber Welded«



Membrane Filter Plate

»Empty Chamber Welded«

Many filtration processes are subject to varying batch sizes and/or frequent changing solid contents. Uncontrolled chamber filling is the consequence, resulting in overstretching the membrane during the squeezing cycle.

The empty chamber design prevents an overstretching of the membrane during the squeeze cycle even in the extreme case – squeezing into an unfilled chamber.

This design is especially qualified for filtrations up to 30 bar and processes with uncontrollable chamber fillings and variable batch sizes.

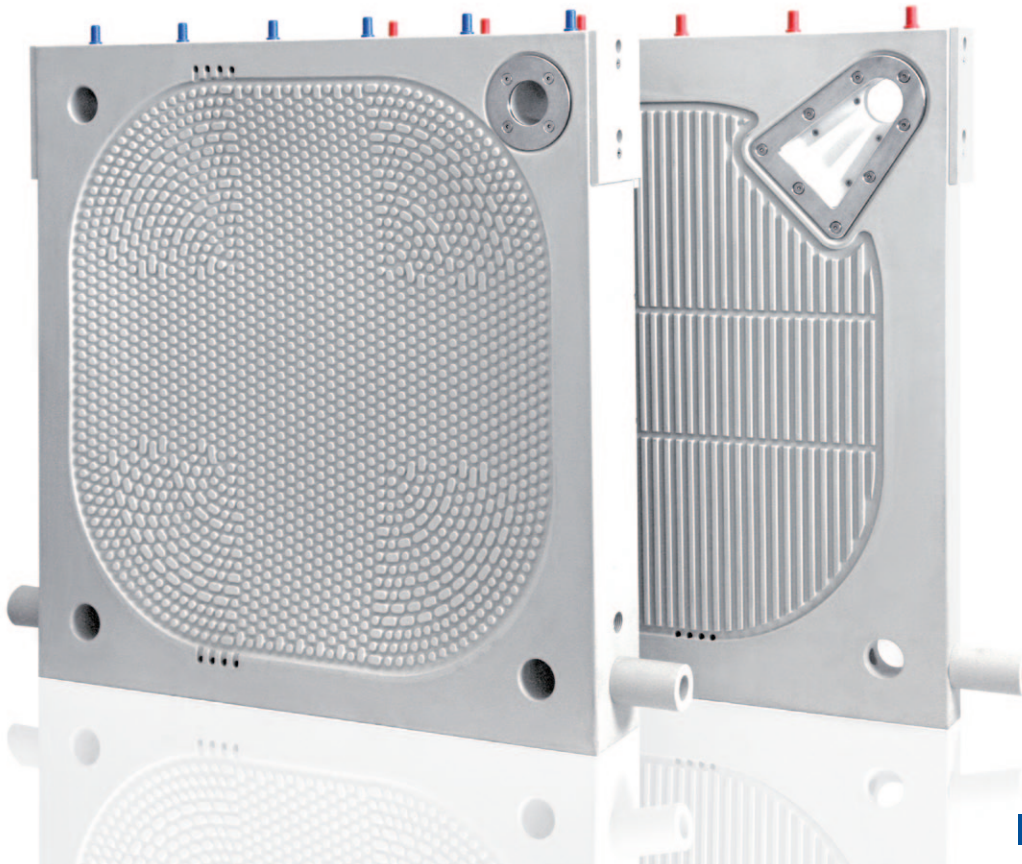
The empty chamber design is a proven standard in many industries for more than 20 years.



- 1 Empty Chamber Welded Membrane Filter Plate**
Corner feed, designed for barreneck filter cloth.
- 2 Drainage**
Filtrate discharge holes.
- 3 Membrane Filter Presses, Food Industry**
Empty chamber welded membrane plates for the filtration of food condiments.

Membrane Filter Plate

»Empty Chamber Welded«



Technical Details

The unique welded empty chamber design meets all requirements for filtration processes resulting in highly compressible filter cakes. In many of today's food applications this design is an industry standard.

Depending on the product requirements, the welded empty chamber design is available with different materials of construction:

- Polypropylene Copolymer Compounds
- Polypropylene Food Grade
- Polypropylene Antistatic
- Polyvinylidene Fluoride

This design feature ensures a low mechanical stress level on the membrane resulting in an extended service life span. Depending on the chemical and temperature parameters of the slurry the membrane life span can exceed 50 000 filtration cycles in most applications. Therefore the welded empty chamber design is preferred for high squeezing pressures up to 30 bar.

Special designs for the common feed eye locations are available such as center feed, corner feed and external feed eyes.

- 1 Empty Chamber Welded**
Mixed pack arrangement for edible oil filtration, 30 bar high pressure squeezing.
- 2 Feed Eye**
Special feeding shoes ensure a constant feeding cross section over the plate pack length and minimize the risk of differential pressures.
- 3 Steel Rings**
Stainless steel clamping rings for single or overhanging filter cloths.

Headquarter

Klinkau GmbH + Co. KG
Raiffeisenstraße 6
87616 Marktobendorf
Germany

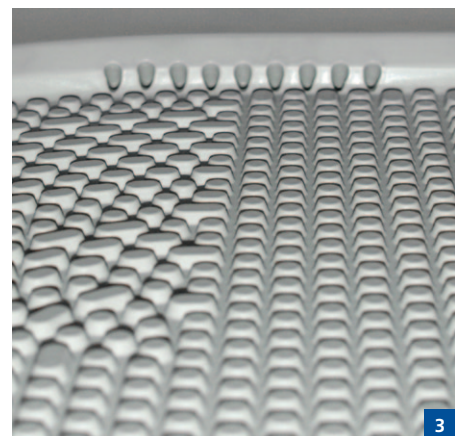
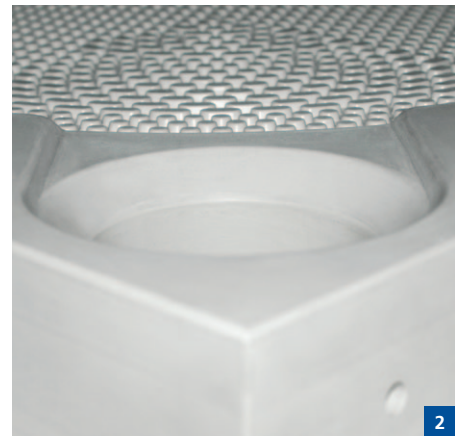
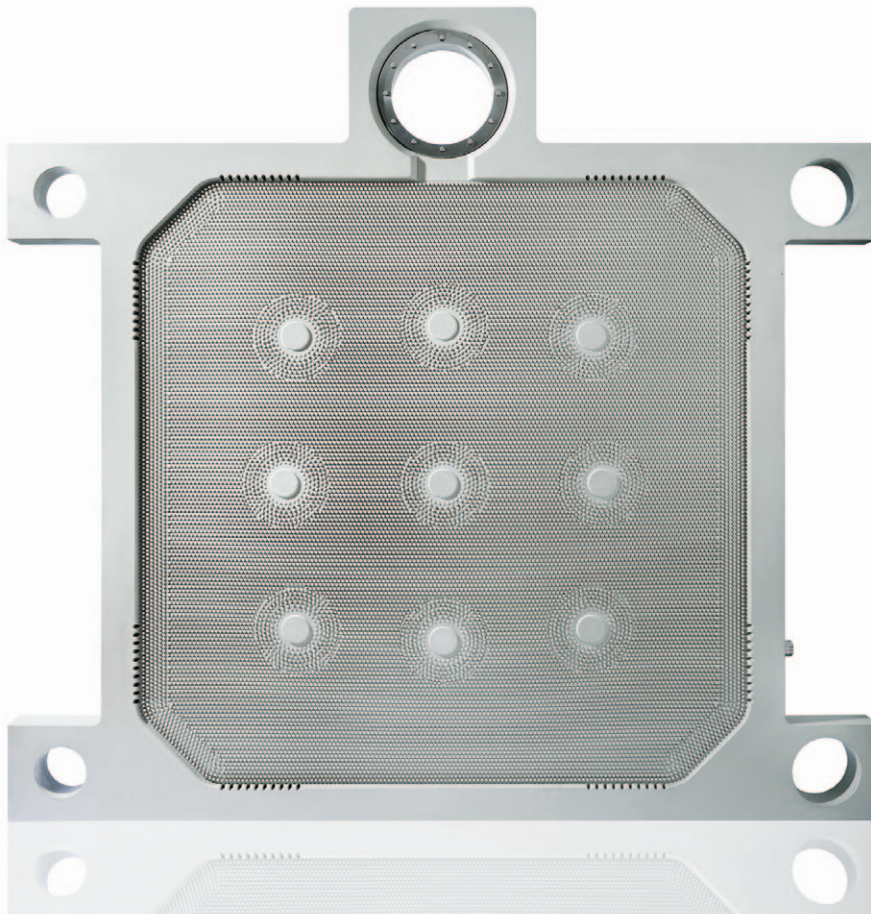
Phone: +49 (0) 8342 4005 0
Fax: +49 (0) 8342 4005 28

info@klinkau.de
www.klinkau.com

Membrane Filter Plate

»Standard Welded«

filtration systems
klinkau



Membrane Filter Plate »Standard Welded«

For over 30 years, the Standard Welded Membrane design has a proven performance record for a broad variety of industries.

Many chemical product filtration processes demand highly efficient cake washing requirements. The Standard Welded Membrane filter plate is manufactured to meet these and all other filtration steps.

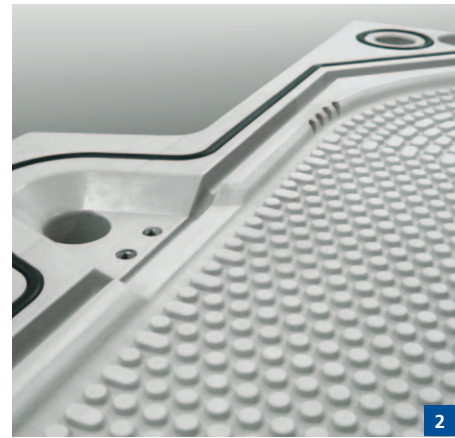
Depending on the process operation parameters such as temperature and pressure, the correct plate design can be achieved to provide the perfect combination of plate stability, cake wash water distribution and slurry feed eye position.

Successful mineral and mining applications require high speed filtration and elevated air volumes for cake blowing demands. The Standard Welded Membrane can be supplied with enlarged external ports for slurry feed, filtrate discharge, and air blow inlet/outlet requirements.

- 1 Mining Plate 2 m x 2 m**
Standard welded membrane filter plate with external porting.
- 2 Feed Eye**
Corner feed design for a barrel neck filter cloth.
- 3 Drainage**
Filtrate discharge holes.

Membrane Filter Plate

»Standard Welded«



Technical Details

The unique design of the membrane ensures a low mechanical stress level resulting in a long life span.

Depending on the chemical and temperature parameters of the filtered slurry, the service life span of a membrane can exceed 50 000 filtration cycles.

A wide range of different materials of construction for the membrane can be selected based upon the filtration process parameters:

- Polypropylene Copolymer Compounds
- Polypropylene Food Grade
- Polypropylene Antistatic
- Polyvinylidene Fluoride
- Thermoplastic Elastomer

In case of acidic or toxic slurries, a leak free plate design CGR can be provided to avoid the dripping of liquid through the filter cloth at the plate sealing edges.

Further the standard welded membrane plate is available in a full antistatic version, suitable for all ATEX classes.

1 Standard Welded Membrane Filter Plate 1.5 m x 1.5 m
In cake washing design and center feed.

2 Standard Welded Membrane Filter Plate
Membrane filter plate in CGR design, leak free.

3 Antistatic Membrane Filter Plate
Antistatic membrane filter plate in CGR design.

Headquarter

Klinkau GmbH + Co. KG
Raiffeisenstraße 6
87616 Marktobendorf
Germany

Phone: +49 (0) 8342 4005 0
Fax: +49 (0) 8342 4005 28

info@klinkau.de
www.klinkau.com